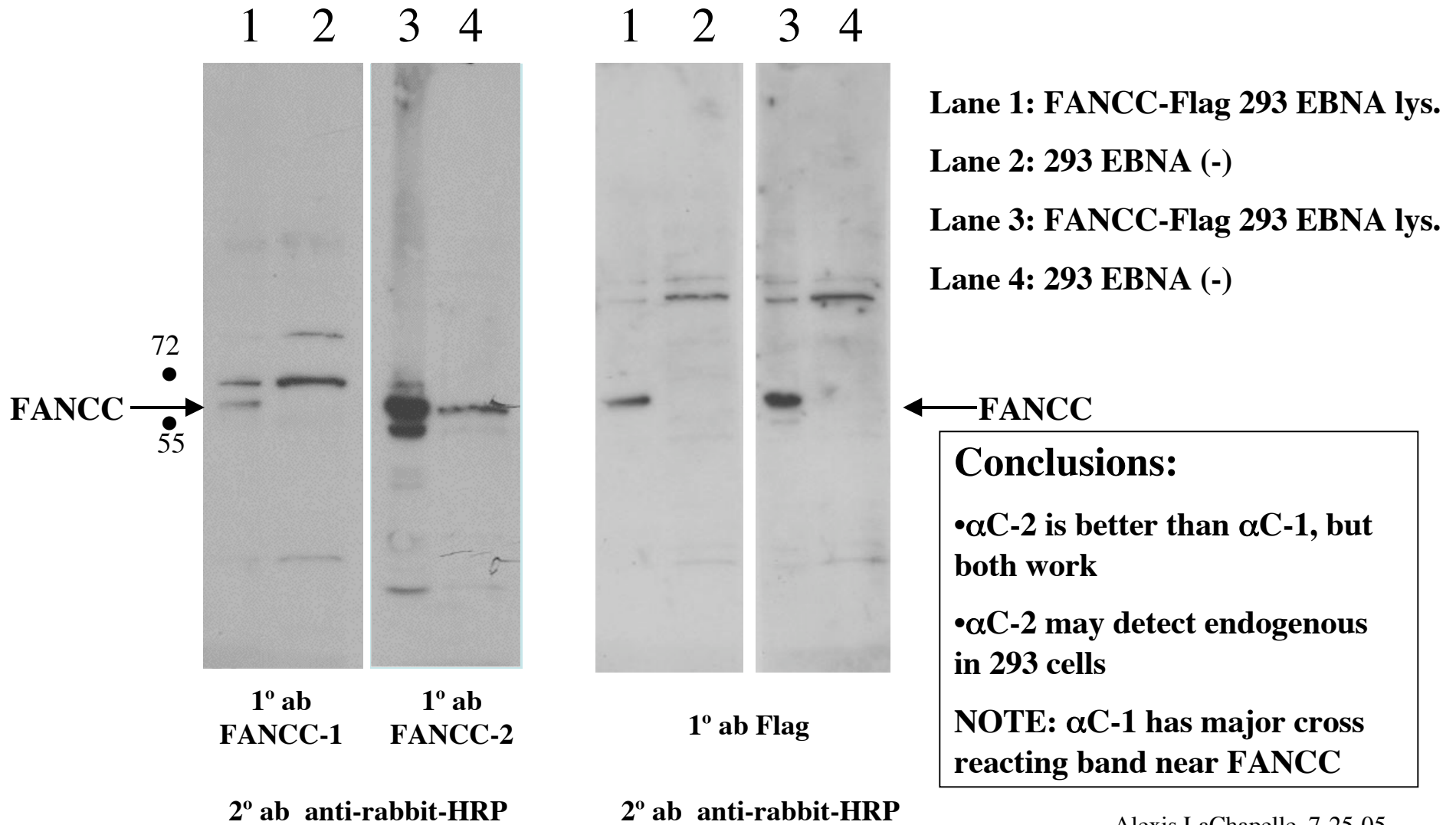
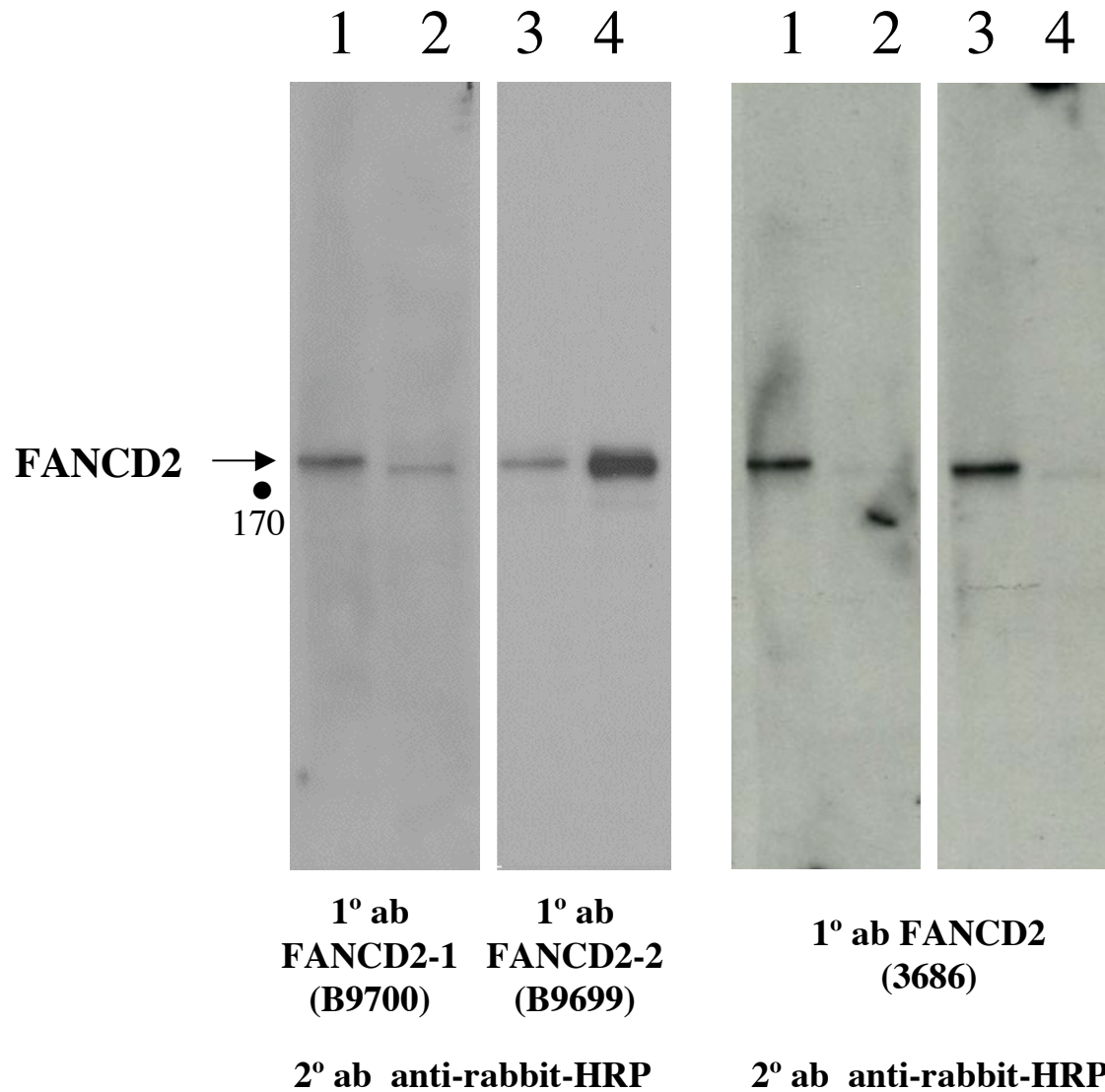


# FANCC Antibody Test



# FANCD2 Antibody Test

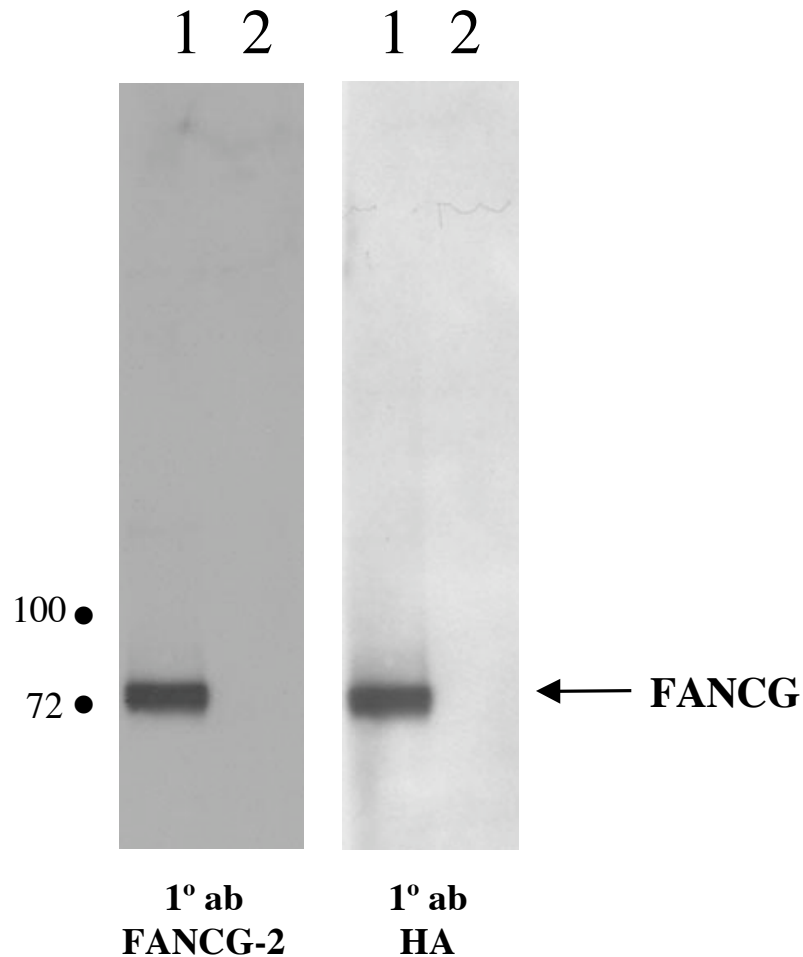


Lane 1: FANCD2-Flag 293 EBNA lys.  
Lane 2: 293 EBNA (-)  
Lane 3: FANCD2-Flag 293 EBNA lys.  
Lane 4: 293 EBNA (-)

## Conclusions:

- Both antibodies work, and detect endogenous D2
- Can't resolve D2-S/D2-L in this experiment

# FANCG Antibody Test



Lane 1: FANCG-HA 293 EBNA lys.  
Lane 2: 293 EBNA (-)

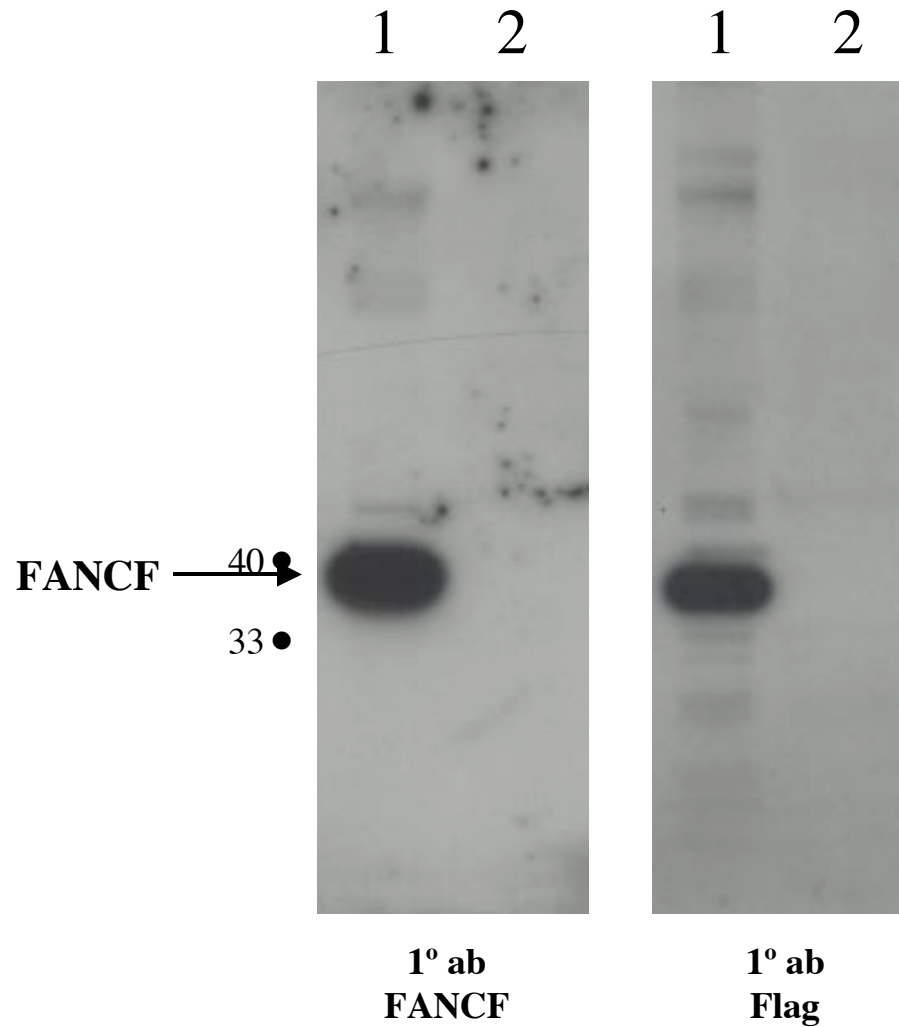
## Conclusions:

- αG-1 no signal (not shown)
- αG-2 very good and specific

**NOTE: Oddly, can't detect endogenous FANCG in 293 cells.**

2° ab anti-rabbit-HRP

# FANCF Antibody Test



**Lane 1: FANCF Precision Flag lys.**

**Lane 2: 293 EBNA (-)**

## Conclusions:

• $\alpha$ F very good and specific

**2° ab anti-rabbit-HRP**